

# atlantic

Experts in **Electric Heating and Hot Water**

**GROUPE  
ATLANTIC**  
UK, ROI & NORTH AMERICA DIVISIONS

# F137 PANEL HEATER

INSTALLATION MANUAL



**TOTAL  
ELECTRIC  
SOLUTIONS.**

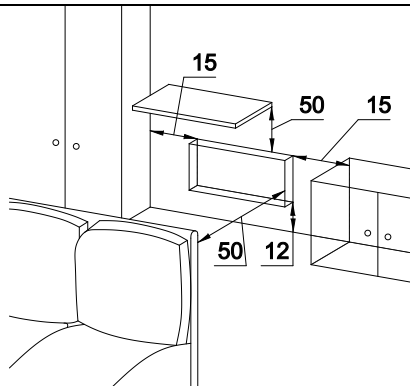
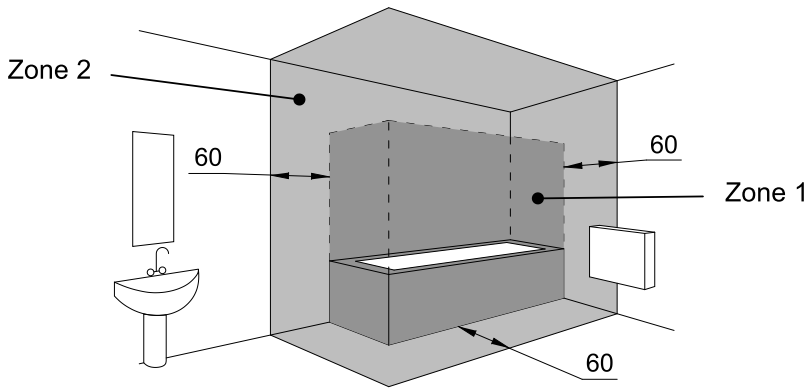
All electrical appliances produced for the Company are guaranteed for one year against faulty material or workmanship. This applies only if the appliance has been used for purposes in accordance with the instructions provided and has not been connected to an unsuitable electricity supply, or subject to misuse, neglect, damage or modified or repaired by any person not authorised by the Company. This guarantee is offered to you as an extra benefit and does not affect your legal rights. The correct electricity supply voltage is shown on the rating label attached to the appliance. Reasonable care has been taken to ensure that this guide is accurate at the time of printing. In the interest of progress the Company reserve the right to vary specifications from time to time without notice.



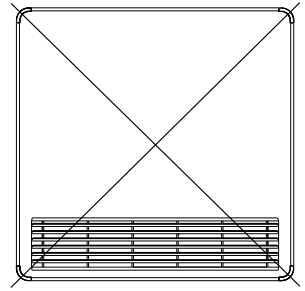
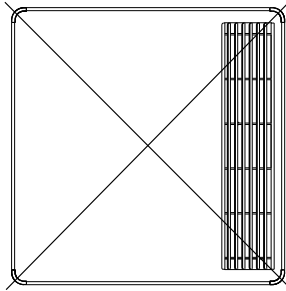
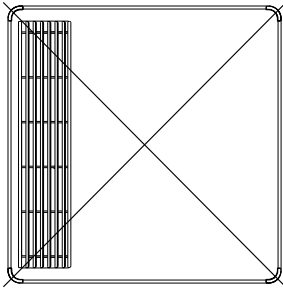
## CONTENT

1. Warning.....	5
2. Installation.....	6
3. Maintenance.....	7
4. Advice for users.....	7
5. Troubleshooting.....	7
6. First switching on.....	8
7. Control unit.....	8
8. Operating modes.....	8
9. Temperature regulation.....	8
10. Lock appliance control box.....	8
11. Appliance settings.....	8
12. Appliance settings menu.....	9
13. Expert menu.....	9
14. Warranty.....	9
15. Model specifications.....	10

### Where to install the device? (The dimensions are given in centimetres)

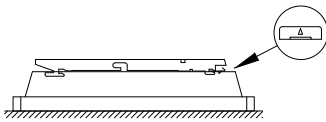


Do not install the appliance

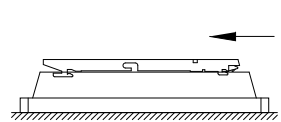


Wall mounting (A, B - Drilling points)

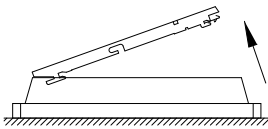
1



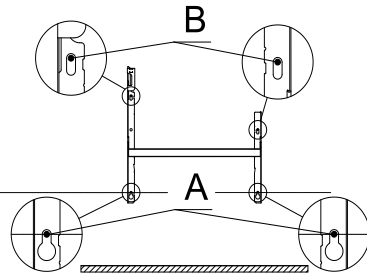
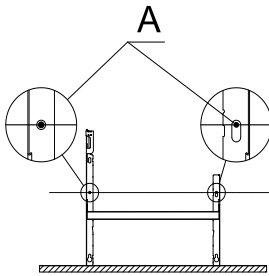
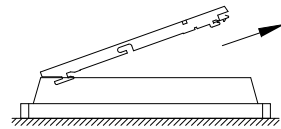
2



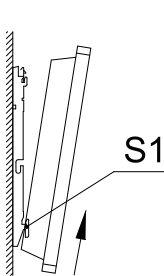
3



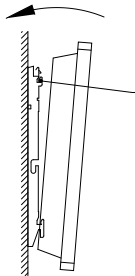
4



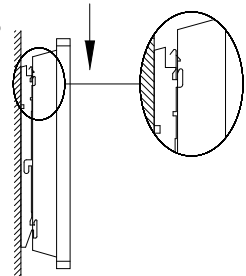
1



2



3






## WARNING



**Caution, hot surface. WARNING: Some parts of this product may become very hot and cause burns on contact. Special care must be taken if children and vulnerable adults are present.**

- Children under 3 years must be kept away from this appliance, unless they are constantly supervised.
- Children between 3 and 8 years should only switch the appliance on or off, provided that the appliance has been placed or installed in accordance with these instructions and that these children have supervision or have received instruction on using the appliance safely and understand the potential hazards. Children aged between 3 and 8 years must not connect, adjust or clean the appliance and perform maintenance or adjustment of the settings.
- This appliance can be used by older children of at least 8 years and by people with physical, sensory or mental capabilities or lack of experience or knowledge, if they are monitored correctly or instructions for using the appliance safely given to them and if the risks were understood. Children should not play with the appliance. Cleaning and maintenance by the user should not be performed by children without supervision.
- This appliance may only be plugged in or connected by an authorized person, according to current local regulations.
- If the power cable is damaged, it should be replaced by the manufacturer, their after-sales department or by a competent person in order to avoid any risk.
- The user manual for the appliance is available from the after-sales department, on the number shown on the warranty form included with this manual.
- When the appliance is first switched on and set to heat, a light odour may be emitted, this can be ignored as it is a result of the manufacturing process.

	<b>CAUTION: For safety reasons, and to avoid overheating, do not cover the heating appliance.</b>
	Appliances carrying this symbol must never be disposed of with household waste, but must be collected separately for recycling. At the end of their life, products must be collected and recycled according to local regulations.
	When an appliance is installed at a higher altitude, the air outlet temperature rises (around 10°C per 1000 m rise in height above mean sea level).

## INSTALLATION

### Where to install the device? (see page 1)

- This appliance has been designed to be installed in residential premises. Please consult your dealer if other circumstances apply.
- The appliance must be installed in line with the current IET Wiring regulations and Building regulations.
- The appliances are class II and protected from water splashes to IP 24. They may therefore be installed in zone 2 of shower rooms. It is forbidden to install the device in zone 1. It must be impossible for anyone using the shower or bath to reach the appliance's controls, however.
- Respect minimum distances to obstacles when positioning the appliance.
- The appliance's support bracket ensures that there is free space behind the appliance so as not to interfere with its operation. The gap between the appliance and the wall must not be obstructed in any way.

### Do not install the appliance (see page 2)

- In a draught that could affect it's operation (beneath a centrally controlled mechanical fan unit, etc.).
- Near curtains or any other flammable materials.
- The air outlet grid and control unit must be visible at the top of the appliance. It is forbidden to mount a vertical appliance horizontally and vice versa.

### Wall mounting (see page 2)

- Release the appliance's latching bar. We recommend you place the appliance flat on the ground. Use a screwdriver to raise the tongue of the fitting, carefully so as not to distort it. While keeping the tongue raised, push the latching bar downwards to release the latches at the top. Pivot the latching bar around the lower latches. Remove the latching bar.
- Fix the latching bar. Place the latching bar on the floor against the wall. Locate the drilling points **A**. These show you where the lower fastenings are. Lift the latching lug, aligning it with the drilling point **A** to locate the drilling points **B**. These show you where the upper fastenings are. Drill the four holes and insert the plugs. If extra support is required, use special plugs (e.g.: in plasterboard). Position the latching bar and screw in place.

- Lock the appliance onto latching bar. Place the appliance at an angle on the supports **S1**. Pivot the appliance to place it on the supports **S2**. Lower the appliance into latching bar. The appliance clicks in place, confirming that it fixed and latched. To release the appliance from the latching bar, use a flat-head screwdriver and push the tongue (top left of the latching bar behind the appliance) towards the wall. Lift the appliance while holding the tongue with the screwdriver. Swing it forward then lift it off the supports **S1**.

### **Electric connection**

- The power supply to the appliance is 220-230V, 50-60Hz.
- A 2-core mains cable is used for connection to the mains, connected via a junction box. (Brown wire = Phase, Blue wire = Neutral).
- In damp atmospheres, such as bathrooms and kitchens, the junction box must be located at least 25 cm from the floor. The appliance's power supply must be connected straight to the mains, after the all-pole cut-off, with a contact opening gap of at least 3mm with no intermediate switch.

## **MAINTENANCE**

### **ATTENTION! All operations are performed only with the device completely de-energized!**

In order to maintain the performance of the appliance, you should use a vacuum cleaner or brush twice a year to remove the dust from the upper and lower grids. Every five years, a maintenance engineer should check the inside of the appliance. In a polluted atmosphere, dirty marks could appear on the appliance's grille. This is because of the poor quality of the ambient air. In this case, it is advisable to check that the room is properly ventilated (fan, air intake, etc.) and that the air is clean. Such dirty marks are no reason to have the appliance replaced under the terms of the warranty.

The casing of the appliance can be cleaned with a damp cloth, do not use abrasive products.

**ATTENTION!** The housing protection should never be cleaned with abrasive and aggressive products.

## **ADVICE FOR USERS**

Putting the appliance at its maximum setting will not increase the temperature faster. If you are out for several hours, consider lowering the temperature. If you have several appliances in one room, let them operate together, so you have a more uniform temperature while optimizing power consumption. This also applies to an empty room, where it is better to let the appliance run at a lower setting, rather than turn it off completely.

## **TROUBLESHOOTING**

- The appliance is not heating: Check that the installation circuit-breakers are engaged. Check the room air temperature.
- The appliance is constantly heating: check that the appliance is not in a draught, or if the temperature setting has been changed.
- The appliance does not follow the programmed commands: If there are any problems (thermostat jammed, etc.) cut the appliance power supply (fuse, circuit-breaker, etc.) then restart the appliance after 5 mins. If the problem often occurs check the power supply from your energy provider.

## FIRST SWITCHING ON

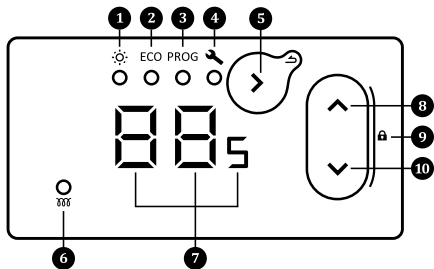
The ON/OFF button is located on the back side of the control unit.

- Set the ON/OFF button into position «1» – to switch on the appliance. When switched on for the first time, the operating mode is Comfort (by default, the heating temperature is 19°C).

- Set the ON/OFF button into position «0» – to switch off the appliance.

**i** Please use this button only when you want to stop the heating for a long time (out of heating season).

## CONTROL UNIT



- 1 - Comfort mode
- 2 - ECO mode
- 3 - PROG mode
- 4 - Settings
- 5 - Mode selection / Confirmation / Back (long press)
- 6 - Heating indicator
- 7 - Screen (indicator)
- 8 - Increase
- 9 - Lock / unlock (long press on 2 buttons)
- 10 - Decrease

## OPERATING MODES

3 heating modes are available:

**Comfort mode** – Allows you to set and adjust normal operating temperature (this temperature is also applied to the Comfort phase in Prog mode).

**Eco mode** – Allows you to set and adjust Eco temperature (this temperature is also applied to the Eco phase in Prog mode).

**Prog mode** – The appliance follows the preset programs for each day of the week. You can change these programs and change time for the Comfort, Eco or heating off phases.

**i** Note: in **Prog mode**, the appliance automatically will ask you to set the time and day of the week, if it's not set yet.

## TEMPERATURE REGULATION

**In Comfort mode** – Press the button until the indicator below the pictogram lights up. The screen shows the last temperature setpoint in Comfort mode (19°C by default). The temperature setpoint can be adjusted between 12°C to 28°C with steps of 0.5°C using the buttons / .

**i** In case of long-term absence, you can set the temperature setpoint to 7°C (frost protection temperature).

**In Eco mode** – Press the button until the indicator below the pictogram lights up. The screen shows the last temperature setpoint in Eco mode (15.5°C by default). The temperature setpoint can be adjusted between 10°C to 19°C with steps of 0.5°C using the buttons / . The maximum Eco temperature setpoint is limited (2°C below the Comfort temperature).

**i** In case of long-term absence, you can set temperature setpoint to 7°C (frost protection temperature).

**In Prog mode** – Press the button until the indicator below the pictogram lights up. It is not possible to change the temperature setpoint in this mode. Use the buttons / to see current operating mode of the appliance follows up. If the screen shows:

– The appliance follows temperature setup in Comfort mode. To change Comfort temperature, go to Comfort mode.

– The appliance follows temperature setup in Eco mode. To change Eco temperature, go to Eco mode.

– The appliance does not heat (possible only in Prog mode).

To change preset programs in Prog mode, go to appliance settings.

**i** It is recommended to use **Eco / Comfort** transition, which is more energy efficient than **Off / Comfort** transition.

## LOCK APPLIANCE CONTROL BOX

To avoid adjustment by children, you can lock appliance control box pressing buttons and at the same time. Hold buttons around 3 seconds.

The screen shows . Appliance control box is locked.

Make same operation to unlock the appliance control box. The screen shows .

## APPLIANCE SETTINGS

Press the button until the indicator below the pictogram lights up. The settings menu contains:

– SETTING THE TIME AND DAY OF THE WEEK

Using buttons and , select parameter . Set the hour . Set the minute . Set the day of the week (1 – Monday, 2 – Tuesday...).

Note: after the appliance has been switched Off / On, it may be necessary to re-set the time and day of the week.

– ACTIVATION / DEACTIVATION THE OPEN WINDOW DETECTION

Allows detection of the temperature change caused by opening and closing a window. If you forget to switch off the appliance before long-term ventilation of the room, this function prevents unnecessary heating.

Using buttons and , select parameter . Activate / deactivate function of the open window detection ( / ).

If the appliance detects that a window has been opened, the parameter flashes on the screen and appliance switches automatically to frost protection mode (7°C).





- Damage associated with improper installation, power supply network that does not meet the standards, improper use or failure to follow the instructions in the manual is not covered by the warranty.

This certificate should be presented only when filing a complaint with the distributor or installer, along with the seller's invoice.

- To apply for warranty service, please contact your distributor or installer. If necessary, you can also contact Atlantic | PO Box 103, National avenue, Kingston Upon Hull, HU5 4JN.

T: 01482 498220

F: 0844 5436 180

With working time limitation	No
With black bulb sensor	No
Contact details	Atlantic   PO Box 103, National avenue, Kingston Upon Hull, HU5 4JN. T: 01482 498220 F: 0844 5436 180

Type of Device	
Serial Number	
Name and address of the customer	
<b>INSTALLER'S STAMP</b>	

### MODEL SPECIFICATIONS

<b>Model identifier: Convector CMG-BD0</b>			
Item	Symbol	Value	Unit
<b>Heat output</b>			
Nominal heat output	P nom	0.5 – 2.5	kW
Minimum heat output (indicative)	P min	0.5	kW
Maximum continuous heat output	P max	2.5	kW
<b>Auxiliary electricity consumption</b>			
At nominal heat output	el max	0.000	kW
At minimum heat output	el min	0.000	kW
In standby mode	el SB	0.000	kW
		0.240	W
Item			Unit
<b>Type of heat output / room temperature control</b>			
Electronic room temperature control plus week timer			Yes
<b>Other control options</b>			
Room temperature control, with presence detection			No
Room temperature control, with open window detection			Yes
With distance control option			No
With adaptive start control			Yes





U0723939-D

# atlantic

Experts in **Electric Heating and Hot Water**

[atlantichheat.co.uk](http://atlantichheat.co.uk) |     

T: 0844 3350 549 F: 0844 5436 180  
E: [enquiries@atlantic-heat.co.uk](mailto:enquiries@atlantic-heat.co.uk)  
Atlantic | PO Box 103, National Avenue,  
Kingston Upon Hull, HU5 4JN

 **GROUPE  
ATLANTIC**  
UK, ROI & NORTH AMERICA DIVISIONS